



Welcome to Year 2
September 2023

Year 2 Team

- Miss Murray – Class teacher
- Miss Mainwairing – Teaching Assistant

Y2 Timetable

Year 2 2023-24 - JLM

Day	8:45-9am	9-9:15	Session 1 9.15-10:05		Session 2 10.15-11:15		Session 3 11:30-12:30		Session 4 and 5 1:15-3.15		
Monday	Purple Pen	write School Worship	RWI/GR	Comfort Break 10:05-10:15am	Writing	Break 11:15-11:30pm	Maths	Lunch 12:30-1:15pm	IPC <u>Humanities</u> 1:15-2:15	SPAG 2:15-2:45	Arithmetic 2:45-3:00
Tuesday	Purple Pen	Class Worship	RWI/GR		Writing		Maths		ICT PPA	P.E PPA	
Wednesday	Purple Pen	Music Praise	RWI/GR		Writing		Maths		IPC <u>Creative</u> 1:15-2:15	Science 2:15-3:00	
Thursday	Purple Pen	Class Worship	RWI/GR		Writing		Maths		R.E 1:15-2:15	PSHE 2:15-2:45	Library 2:45-3:00
Friday	Spelling Shed Activity		RWI/GR		Writing		Maths		Music 1:15-2:00	P.E 2:00-2:45	Celebration Worship – 2:45pm



Quick guide to attendance.

Our school target is 96%

Did you know?



Attendance Matters

Every student. Every day.

100%
attendance

In school
Everyday!

PERFECT!

96-99.9%
attendance

Good

90-95.9%
attendance

Concern

Under 90%
attendance

Problem

Under 80%
attendance

Severe

School starts at 8:45



If you are ...

5 MINUTES LATE EVERY DAY =
3 DAYS ABSENT PER YEAR.

15 MINUTES LATE EVERY DAY =
2 WEEKS ABSENT PER YEAR.

30 MINUTES LATE EVERY DAY =
4 WEEKS ABSENT PER YEAR

How does attendance impact
your child's future?

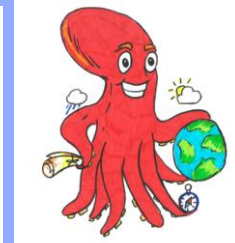
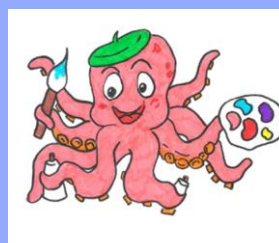
Attending 4.5 days a week = 90% attendance is 4 weeks missed per year

Attending 4 days a week = 80% attendance. More than half a term missed per year or 2 full years missed over the course of their school career.

Attending 3.5 days each week = 70% attendance. More than a quarter of the school year missed.

IPC Curriculum

Autumn	Spring	Summer
Brainwaves	Time travellers	Treasure Island
From A to B	Lets plant it!	We are what we eat
What's it made from?		



Objectives and Expectations for children in Year 2

I have given you all a pack which shows you the expectations for children in year 2 in maths, reading and writing. These are for you to take away and look at carefully – if you wish to come and talk to me about them please feel free to do so.

Phonics

- Children have daily phonics sessions in school.
- Children are regularly assessed and placed into groups that suit their current knowledge and application of sounds.
- Children completed the Year 1 phonics screener last year and, alongside in school assessments, have been streamed into new groups.
- Some children have completed the programme and now access RWI comprehension sessions.
- Children will continue to complete the RWI phonics programme throughout the year.

English - Reading



- Children still on the phonics programme will bring home a phonics reading book. Children who have completed the programme will access the whole school reading scheme.
- Books and records need to be in school every day.
- Children need to read at home at least 3 times per week
- Children should spend at least 10 minutes reading to an adult.
- Records should be signed by an adult.
- Books will be changed once per week in school.

Test Questions

Where Does Wool Come From?

At different times of year, we need to wear different types of clothes. When the weather is cold, we sometimes wear thick jumpers, hats, scarves or gloves. These are often made from a material called wool.



Practice questions

(a) People wear scarves and gloves in...

Tick **one**.

warm weather. cold weather.

rainy weather. sunny weather.

(b) What are warm clothes often made from?

What is wool?

Some animals have feathers, some have shells, some have hair and some have scales. Wool is a type of animal hair. Most of the wool we use comes from sheep. Wool can also come from goats and more unusual animals, such as camels or llamas.



a llama

1 What is wool?

Tick **one**.

a type of feather

a type of shell

a type of scale

a type of hair

2 Which animal does most of our wool come from?

Writing


- Teach-model-practice-apply
 - Applying phonics skills
 - Using Year 1 and 2 spellings
 - Common exception words
 - Basic punctuation
-
- Presentation
 - Cursive handwriting



SPAG Test questions

Write the **present tense** of rode in the box.

The children rode their bikes.



The sentences below have their punctuation marks covered.

Which sentence is a **command**?

Tick **one**.

Throw the ball ●

You could throw the ball ●

Can we throw the ball ●

How big that ball is ●

Why does the underlined word start with a **capital letter**?

This afternoon, we will play games outside.

1 mark

Mathematics

- Follow a mastery curriculum
- Real life problem solving and reasoning activities
- Written and mental strategies
- Expectations of presentation
- Recall of number facts
- Times table practice



Test Questions

- Arithmetic and Reasoning

$2 + 2 + 2 =$

$16 + 3 =$

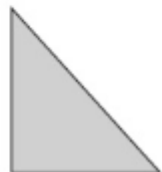
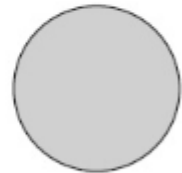
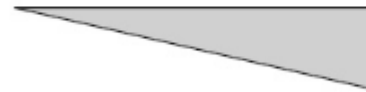
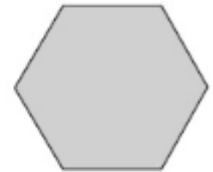
$90 - 70 =$

$57 + 7 =$

$11 - 8 =$

$10 \times 10 =$

Tick the **two** shapes with the same number of sides.



$18 + 80 =$

$8 \div 2 =$

$9 + 8 + 7 =$

$12 \times 5 =$

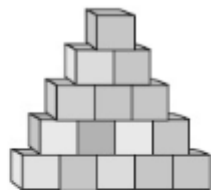
$\frac{1}{2} \text{ of } 22 =$

$54 - 35 =$

Ben wants to build a tower with **15** blocks.

He only has **9** blocks.

How many **more** blocks does Ben need?


blocks

Physical Education

- Tuesday and Friday

P.E. Kit

- White T-shirt
- Black shorts
- Black pumps / trainers

Winter Games Kit

- Plain tracksuit - no football strip
- Trainers



Homework

Spellings will be handed out every Friday and the children will be tested the following Friday.

How you can help at home?

- Encourage your child to complete homework and practice spellings
- Daily reading at home
- All of the children will be given a username and password for both TT Rock Stars and spelling shed – please encourage them to log in daily.



Healthy Minds

- Water bottles – access all day
- Healthy snack at comfort break
 - Healthy lunchboxes



Classroom Plan – Our Promises

- Developing independence
- Responsibilities to take care of their own belongings, letters, homework and PE/ Games kit
- Spare homework and letters always available
- To ask for help whenever the children require it

Behaviour and Discipline

- Positive discipline
- Red cards
- Parental involvement

How to stay in touch..

- <http://www.stpaulscephprimaryschool.co.uk/>
- Newsletter and notices
- Arbor app



Thank You

